

# Assembling Instruction

## Swing Floor ‘Stuttgart’ (Art.No. 202 and 3202)

### Attention

This floor is designed for use only in sport halls and must be assembled in weather-secured facilities.

Minimum 4 skilled people should be allocated to assembling.

**Please read this assembling instruction carefully, before you assemble the swing floor.**

### Scope of supply

Q-ty	Description
7	rollable mats 1400 x 200 x 4.0 cm
100	m velcro tape to fix the rollable mats (2 rolls)
50	m white velcro tape (total of 4 strips approx. 12.25 running m) to mark the competition area
50	panels with spring elements 250 x 125 cm
36	equalizing panels 250 x 125 cm with velcro (soft)
8	equalizing panels 62 x 250 cm with velcro (soft)
18	equalizing panels 125 x 125 cm with velcro (soft)
4	equalizing panels 62 x 125 cm with velcro (soft)
4	tighten belts with quick fastener
24	border parts of foam approx. 80 x 217 x 10 cm

### Assembling of the floor

- lay out 4 tighten belts so that they form a square of approx. 11.4 x 11.4 m. This means that the belts are placed approx. 80 cm away from the edge of base construction. They lie between the spring elements.
- lay out the first row of 5 panels with spring elements (125 x 250 cm) on top of the tighten belts as shown on drawing 1. Please note that the panels should be placed very tight to each other.
- the top of these 5 panels should be covered with a row of equalizing panels (1 pc. 62 x 125cm, 4 pcs. 125 x 250cm, 1 pc. 62 x 125cm), as shown on drawing 2. These panels are locked together and cannot be moved anymore.
- lay out the next panels with spring elements and cover them immediately with the equalizing panels in order to avoid construction displacement. Please note that the panels should be placed very tight to each other. See drawing 3.



- as soon as the wooden base construction is assembled, tighten the 4 tighten belts.
- the next step is to lay out the border foam parts. There should be 6 parts on each side of the swing floor. The foam parts are fixed to the panels by means of small velcro strips. Please note that a small gap should be kept between the foam parts, so that the air under the floor can circulate. (Otherwise the springing characteristics of swing floor will change). See drawing 5.
- unroll the rollable mats when covering the floor. They cover the plywood plates approx. 1m from the sides. Please pay attention that the carpet is placed in the same pile direction. Minor differences in colour can appear.
- 6 velcro tapes should be placed on the joints of unrolled mats to fix the mats together.
- the last step is to mark the competition area with white velcro strips. Please note that according to international norms **the outer line of the marking tape** corresponds to the competition area of 1200 x 1200 cm. (The marking tape is the part of the 12 x 12 m competition area).

### Storage

#### Please store the swing floor always in a dry place!

The panels are delivered on 4 special transportation pallets, which at the same time can be used for storage. Each pallet is suitable to store 12 or 13 panels with spring elements and 12 or 13 equalizing panels. The panels must be stored **in upright position!**

In order to extend the life span of the base construction the lower panels should be regularly (each 8-12 months depending on the use frequency) exchanged. That will allow avoiding uneven, one-sided wear of floor in diagonal zones subject to stronger loads. The loads in the diagonals and especially in the landing zones (corners) are the strongest.

Therefore SPIETH Gymnastic recommends in circle of 4-5 years or depending on usage to replace the single elements of the base construction in the landing zones subject to strong loads on a regular basis.

#### WARNING!

That is of particular importance that the wooden panels with spring elements are stored in vertical/upright position. When putting elements on each other the foam parts shrink due to a heavy weight. Therefore the swing floor loses its rebound effect and the height of the single elements changes.

The velcro tapes should be rolled up.

The rollable mats should be vacuum cleaned before storage. The mats should be rolled up and stored in a standing position. The edges of the rollable mats should be fixed by velcro strips.

#### Maintenance advice

The spots can be removed with the standard spot remover. Please make at first a test on a smaller place of the carpet.

**WARNING**

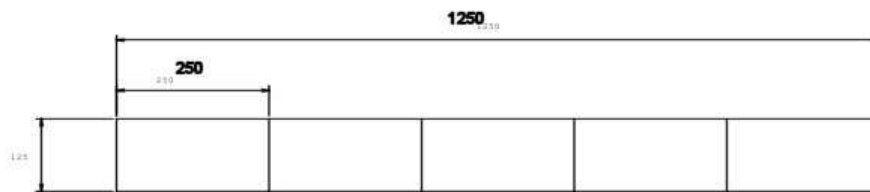
Any activity involving motion or height creates the possibility of serious injury including permanent paralysis and even death from landing or falling on the neck or head or other parts of the body.

You assume a risk of serious injury in using this equipment. However, the risk can be reduced by strictly following these rules at all times.

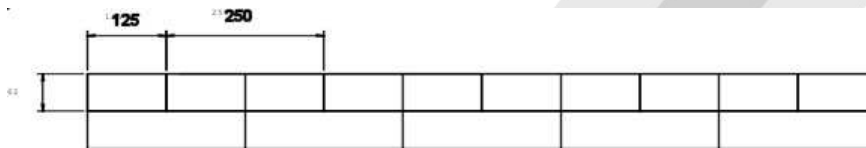
1. Use this equipment only under the supervision of a trained and qualified instructor.
2. This equipment must be used only when protected by proper matting as recommended for each piece of equipment by the International Gymnastic Federation. If doubt concerning proper matting, do not use this equipment.
3. This equipment must be used with proper spotting equipment and qualified instructors suitable to the activity or skill. Always consult an instructor.
4. Know your own limitations and the limitations of this equipment. Follow progressive learning techniques and always consult an instructor.
5. Always inspect this equipment for proper stability before each use.
6. Always inspect this equipment for loose fittings, loose cables and lock before each use. Replace any worn, defective or missing parts.
7. Always inspect this equipment for improper or unsafe installation. If in doubt, do not use this equipment.

SPIETH Gymnastic GmbH – safety in gymnastics

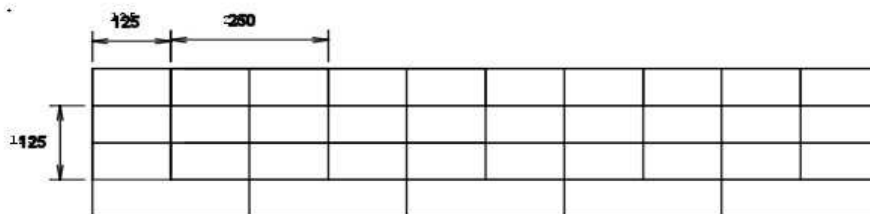
Drawing 1

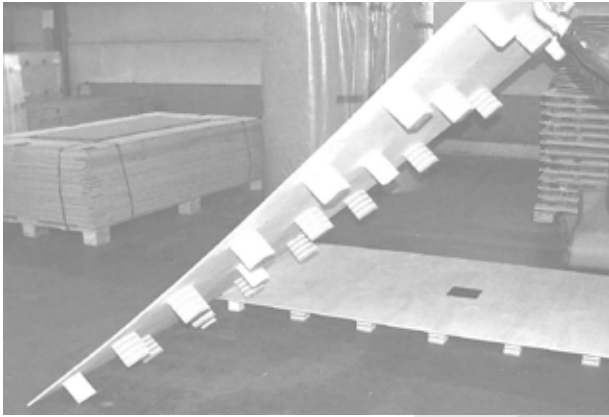


Drawing 2

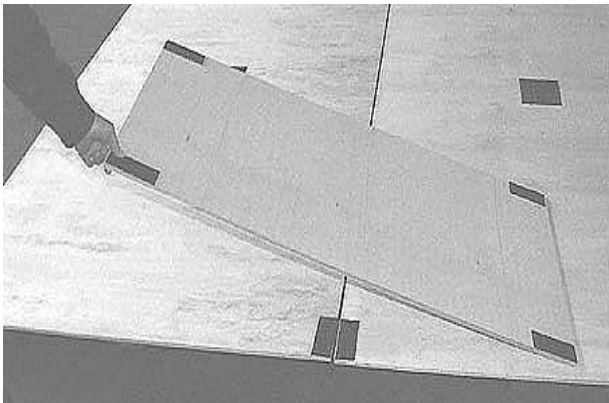


Drawing 3

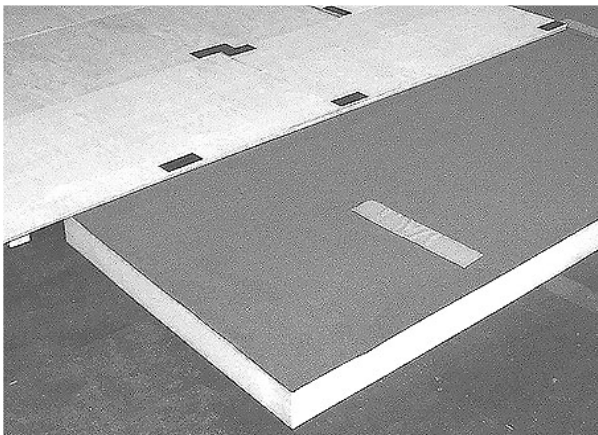




Lay out of sections



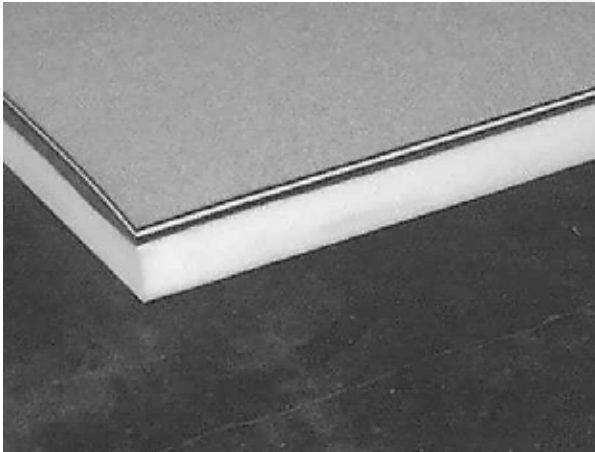
Lay out of extra plywood panels for stabilisation



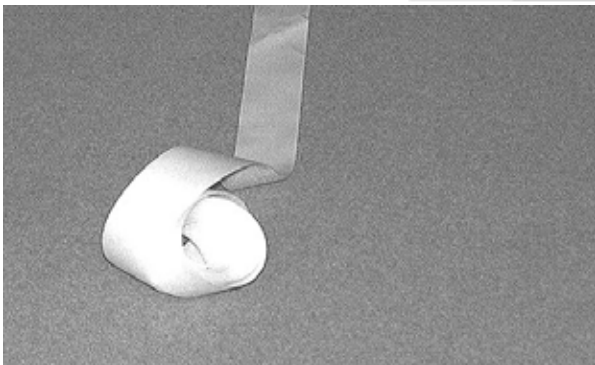
Layout of surrounding foam

ASSEMBLING INSTRUCTION

- 6 / 6 -



Lay out of rollable mats



Marking of competition area