

Please assemble as follows:

1. Unpack all parts. Place crossbar and posts rectangular to each other on the ground (groove should be on top side). Insert 2 nuts M 6 into each side of the crossbars.
2. Equip crossbar with corner connection and fix with countersunk screws M 8 x 20. Insert two nuts M 6 into the groove of each post. Stick posts onto the corner connections of crossbar and secure with screws like before mentioned.

(For cornerwelded goals, posts and crossbar will be connected with straight profile)

3. Screw strut to the net hoop by use of socket head cap screw M6 x 40 (resp. M6 x 50 for Art. 50105), nut M 6 and washer 6,4 x 12,5. Screw hoop and strut with socket head cap screw M 6 x 22 and washer into of the profile groove. Place net hooks like described enclosed in a distance of 30 cm at posts and crossbar.
4. Slide ground sleeves onto the posts and place assembled goal into the foundation hole (80 x 80 cm, app. 1 m deep). Before encase in concrete place, a pipe for drainage purposes directly underneath the hole drilled into the bottom side of the sleeve. This measures that surface water will drain out of the sockets and avoid damages if freezing. Align goal and adjust height carefully before pouring the concrete.
5. After the concrete has set (1-2 days app.) the goals can be removed from the ground sleeves. Please close the top of the ground sleeves with provided covers.

Equipment list

168 pcs.	Plastic net hooks	Art. 116	
16 pcs.	Nuts	M 6	
4 pcs.	Washer	6,4 x 12,5	DIN 125
16 pcs.	Washer	6,4 x 18	DIN 9021
4 pcs.	Nuts	M 6	DIN 934
4 pcs.	Socket head cap screw	M 6 x 40	DIN 912 (for F5455)
4 pcs.	Socket head cap screw	M 6 x 50	DIN 912 (for F5400)
16 pcs.	Socket head cap screw	M 6 x 22	DIN 912
16 pcs.	Countersunk screw	M 8 x 20	DIN 7991
1 pcs.	Allen Key	SW 5	DIN 911

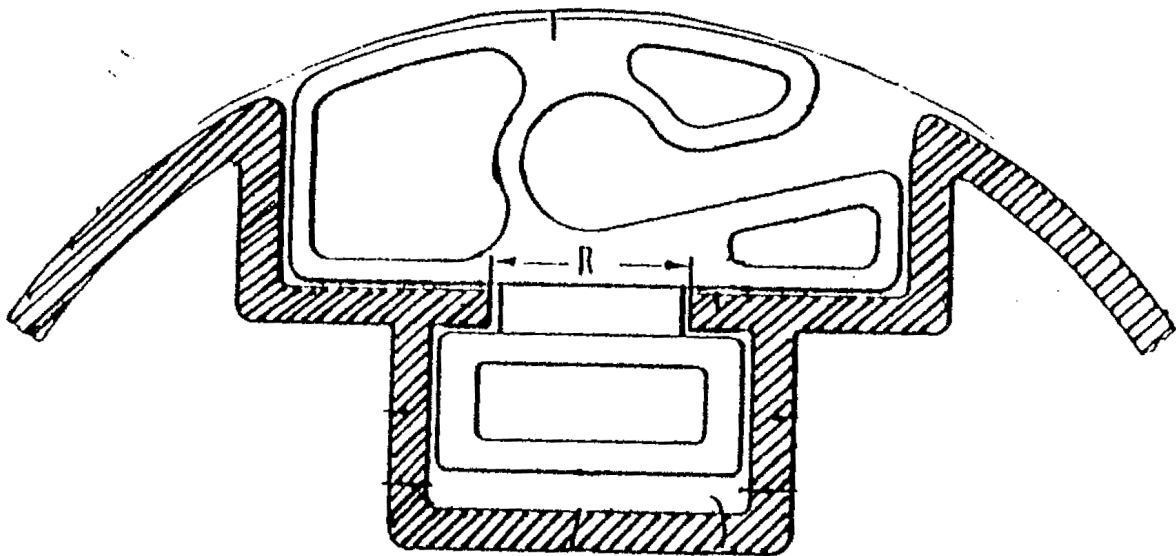
Assembly Instruction

Achtung !! Neue Netzhaken aus Kunststoff !!

Auf Grund der unterschiedlichen Netzstärken haben wir die doppelte Menge an Netzhaken beigelegt. Bitte setzen Sie je 2 Haken im Abstand von 15mm gleichmäßig in die Latte-/ Pfostenkonstruktion. 1 Netzhaken nach oben, der andere nach unten. Somit ist gewährleistet, daß Netze mit 3mm Materialstärke exakt in den Haken befestigt werden können.

Attention !! New plastic moulded net hooks !!

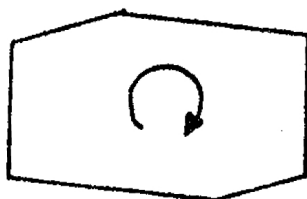
Because of different twine sizes of nets we enclosed double amount of net hooks. When net hooks will be fitted, distribute equally along the bar/ post construction two hooks 15 mm apart from each other. One with opening upwards, one with opening facing down. In this way it is guaranteed that the nets are unable to slip out of the hooks.



Anstatt Mutterstücke und V2 A Netzhaken werden die Kunststoff-Netzhaken mit einer Zange in die Profilnut eingedreht. Netzhaken bitte nur in dieser Richtung über die abgerundete Ecke drehen. (siehe Skizze)

Instead of nut pieces and V2 A net hooks the plastic hooks will be turned into the profile slot with a tongs. Net hooks only turn in direction of rounded edges. (look at drawing)

Profilnut



Einheit/Stückliste für 1 Paar Tore	
1	2x Leiste
2	2x Pfosten links
3	2x Pfosten rechts
4	2x Netzbügel links
5	2x Netzbügel rechts
6	4x Alu-Eckverbinder
7	4x Bodenhülse
8	4x Decal für Bodenfüße
9	100 Netzhalter mit Doppelhaken
10	16 Gewindestiftchen M8
11	16 Zylinderschraube mit Innensechskant M8x16
12	32 Seilschraube mit Innensechskant M8x20
13	4 Sechskantschraube M8x45
14	4 Mütter, selbstsichernd
	1x Inbau-Schlüssel SW 5 mm

Zählungsschritt	F5400	Index	1:30
Montageanleitung für Fußballtor			
732x244 cm mit Standard Netzbügel			
KÜBLER SPORT			
Schutzvermerk nach DIN 34 beachten			
Belager Name	Adresse		