

Please proceed as follows:

1. Unpack all parts and equipment. Lay down posts and crossbar rectangular to each other that profile groove is showing to rear side and parts of base frame that profile groove is showing upwards.
2. Place one nut M 6 each into upwelded post part of crossbar. Now connect posts with crossbar while using the connection profile and countersunk screws M 8 x 20.
3. Continue with base frame. Place one nut M 6 into side part of base frame (miter side). Connect base frame parts with diecasted corners and countersunk screws M 8 x 45 and M 8 x 20. Insert the base frame construction with upwelded connection profiles into the post/crossbar construction. Fix both parts with countersunk screws M 8 x 20. The screws at top grip into thread of connection profile, the screws at bottom will be fixed with nut M 8 and spring washer you have to place inside of the profile. It's helpful if you first secure the inserted nuts with a screw to avoid that they slip away.
4. For fixing of net hoops place nuts in groove in this way that they are exact under the openings of hoop plate and strut. Fix hoop and strut with socket head cap screw M 6 x 22 and washer at posts and crossbar.
5. Fix strut at hoop with socket head cap screw M 6 x 50. Then adjust the whole construction and tighten all screws once again.
6. Distribute net hooks equally into groove of profiles like described enclosed.

ATTENTION !!! Goals only have security certificate in connection with ground anchor Art. 50161

Please pay attention: Hang up nets loose into the goal. Don't pull them over the net hoops. They shouldn't be tighten to avoid the return of the ball.

Screw equipment

200 pcs.	net hooks plastic	Art. 116	
20 pcs.	nut pieces	M 6	
20 pcs.	socket head cap screw	M 6 x 22	DIN 912
4 pcs.	socket head cap screw	M 6 x 50	DIN 912
4 pcs.	nuts	M 6	DIN 934
8 pcs.	nuts	M 8	DIN 934
8 pcs.	spring washer	B 8	DIN 127
32 pcs.	countersunk screw	M 8 x 20	DIN 7991
8 pcs.	countersunk screw	M 8 x 20	DIN 7991
8 pcs.	countersunk screw	M 8 x 45	DIN 7991
20 pcs.	washer	6,4 x 18	DIN 9021
1 pcs.	hexagon socket wrench	SW 5	DIN 911

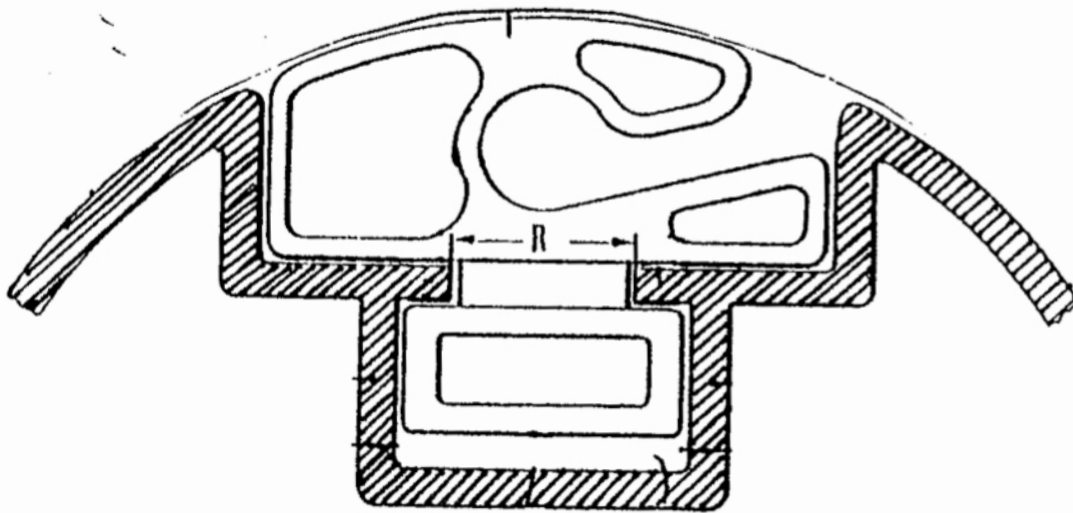
1 assembly instruction

Achtung !! Neue Netzhaken aus Kunststoff !!

Auf Grund der unterschiedlichen Netzstärken haben wir die doppelte Menge an Netzhaken beigelegt. Bitte setzen Sie je 2 Haken im Abstand von 15mm gleichmäßig in die Latte-/ Pfostenkonstruktion. 1 Netzhaken nach oben, der andere nach unten. Somit ist gewährleistet, daß Netze mit 3mm Materialstärke exakt in den Haken befestigt werden können.

Attention !! New plastic moulded net hooks !!

Because of different twine sizes of nets we enclosed double amount of net hooks. When net hooks will be fitted, distribute equally along the bar/ post construction two hooks 15 mm apart from eachother. One with opening upwards, one with opening facing down. In this way it is guaranteed that the nets are unable to slip out of the hooks.



Anstatt Mutterstücke und V2 A Netzhaken werden die Kunststoff-Netzhaken mit einer Zange in die Profilnut eingedreht. Netzhaken bitte nur in dieser Richtung über die abgerundete Ecke drehen. (siehe Skizze)

Instead of nut pieces and V2 A net hooks the plastic hooks will be turned into the profile slot with a tongs. Net hooks only turn in dirction of rounded edges. (look at drawing)

Profilnut



